

fabexx[®]

Thinking different...



a world of endless possibilities...

Fabexx® is a new and comprehensive fabric system that is now being used to replace almost every traditional graphic and imaging method such as cut self-adhesive film, digitally printed self-adhesive film, digitally printed foam boards, printed wall paper and traditional light boxes.

Utilising special aluminium profiles, these distinctive systems are elegantly designed to be used either as a one off install or particularly multiple site installs when regular image and graphic changes are required and all this without the need for any specialist installers or tools.

After the initial installation, Fabexx® makes it easy to use your own staff to hit those simultaneous campaign deadlines each time, every time. All with the added benefit of no troublesome 'out of hours' access arrangements to make with staff, suppliers and ongoing logistics problems, saving you valuable time, money and stress!

The real benefit of this system is our 'Graphics Only' delivery service which means that, timing and distance are no longer a hindrance when changing campaigns or information. We supply graphics to customers all across the world, even those who have fabric frames already in place.

'At just 18mm thick, Fabexx 18 Corelight is the world's thinnest illuminated fabric graphic system'

fabexx®
fabric extrusion system

Why fabric?

Whether it's the standard Fabexx 18, Fabexx 40 or 90 single or double-sided illuminated versions, Fabexx Y2, Fabexx Magna magnetic merchandising display, Fabexx Signa for the extra sophistication of illuminated 3D branding and logos or, the Fabexx Fonix sound absorbing system, we have something that will be perfect for your needs.

There are many reasons and advantages such as;

- Ultra thin illuminated displays (18mm).
- No unsightly jointing or overlaps.
- Vibrant colour reproductions with specialist printing technology.
- Can be wall or ceiling mounted, suspended or free-standing
- Easy to install.
- Extremely quick to change the image or graphic.
- Reduced logistics costs.
- No specialist transportation.
- No specialist installers required.
- Graphics and images can be illuminated.
- Single or double-sided.
- B1 fire rating on all fabrics (carried out by a German test centre)
- Quick & easy to assemble and disassemble
- Easy 'Flat-Pack' transportation with lower costs.
- Fabexx® offers a bespoke image and/or graphic reproduction service.
- The graphics dimensions can be up to 3.1m in height or width by whatever length meaning that floor to ceiling graphics are not a problem anymore.

fabexx®

What else?

The other advantage is the ability to use Fabexx® for doors, around doors/window reveals and other obstacles, such as

Break Glass alarm units and electrical switches etc..

We also supply special clear 'Push Plate' and stainless steel 'Pull Handle' systems that are simple to use and can be removed and refitted by anyone without any tools.

Fabexx® can also be used for;

- Exhibition stands •
- Light features •
- Ceilings •
- Partition walls •
- Suspended •
- Free-standing •
- Magnetised display systems •
- Sound absorption acoustic paneling •
- Work station screens •
- Reception desk branding •
- Speaker covers •
- Interior decorating

With Fabexx® the possibilities are truly endless.

We have specialist manufacturing and design facilities so, that we can offer a bespoke service, if you have a particular or unique requirement, don't worry we can help.

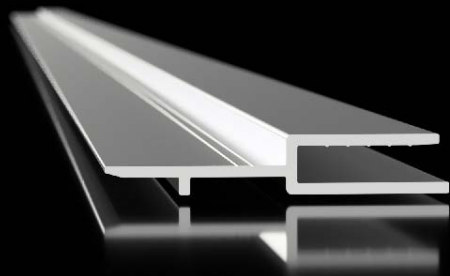
It's easy, call now for a no obligation quotation or advice.

fabexx®

Profiles

fabexx[®] 90

Our Fabexx 90 profile can also be used in illuminated or non-illuminated configurations. Fabexx 90 can be mounted to walls and ceilings. With stabilising brackets it can be free-standing for exhibition stands or window display backdrops.



fabexx[®] Y2

Our Fabexx Y2 profile can be used in window and door reveals as well as ceiling and wall recesses. It can also be used in shop display furniture in order to incorporate imagery and graphics and for retro fitting fabric graphics into existing light boxes.

Fabexx 40 is our smallest double sided profile that can also be used as a single sided unit. Like most of our profiles it can also be illuminated or non-illuminated to allow maximum flexibility. The profile features internal slots that provides the profile the ability to accommodate Corelight panels for single and double sided illumination.

fabexx[®] 40



fabexx[®] 18

Fabexx 18 is our illuminated and non-illuminated extrusion which can be mechanically fixed to walls and ceilings or bonded to glass or other substrates unsuitable for mechanical fixing. We have included special channels to allow for square head bolts to be used to attach various bracing, corner angles or suspension cleats. The profile can also be used with special door push plates and handles.



Accessories



We have a variety of accessories to help you make the most of fabric graphic technology with our Fabexx system profiles.

We have both door handles and push plates to allow previously usable spaces to be utilised to cover the whole wall complete with doors. All while being able to allow your customer's own staff to remove and refit the accessories without the need for any tools.

- Removable Door handle
- Removable Push Plate
- Square Head Bolt
- LED Clip (for LED rigid strips)
- Jewellery display (not illustrated)
- Product display (not illustrated)

LEDs & Drivers

Add another dynamic to your fabric graphic why not illuminate it?

We supply various LED strips in a range of static colours. We also offer LED flexible and rigid strips with white colour temperature control as well as colour changing RGB LED's in both 12v and 24v DC.

LED strips can be supplied in both flexible and rigid versions, we also supply front and side firing versions

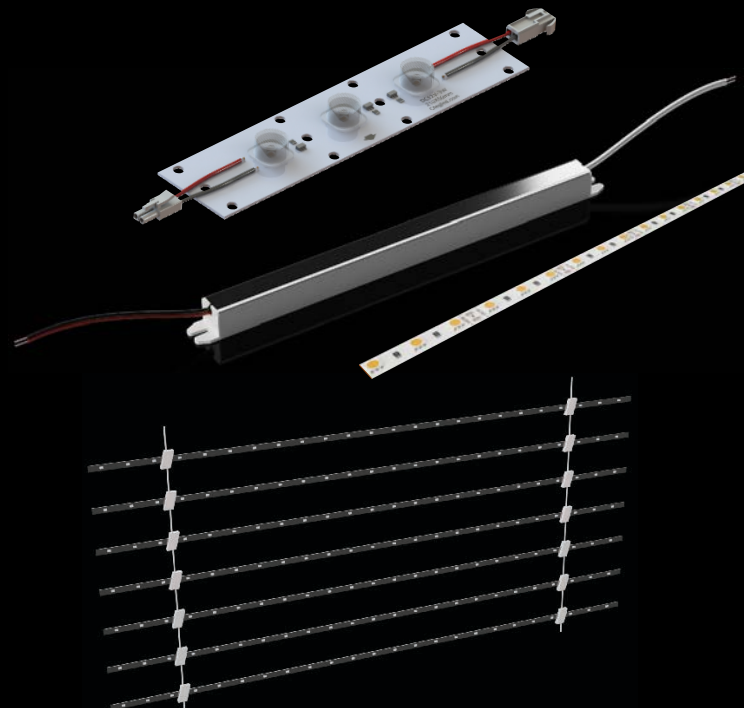
We offer an extensive range of 12/24v LED drivers.

LED drivers can be supplied in either for indoor or outdoor.

We provide technical advice to ensure that your LED lighting is matched to the correct driver.

We can also provide technical advice to ensure that your fabric graphic looks it's best.

For more information or technical advice call us now:



fabexx®

Examples



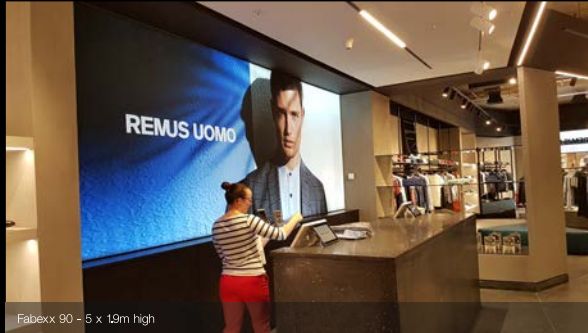
Fabexx 18 Corelight - world's thinnest illuminated fabric frame



Fabexx 18 - Shop Front Advertisement 8 x 3.1m high



Fabexx 18 - 6.1 x 3.1m high



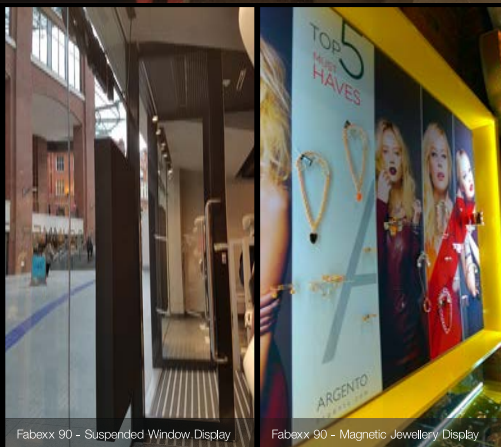
Fabexx 90 - 5 x 19m high



Fabexx 90 - Free-standing



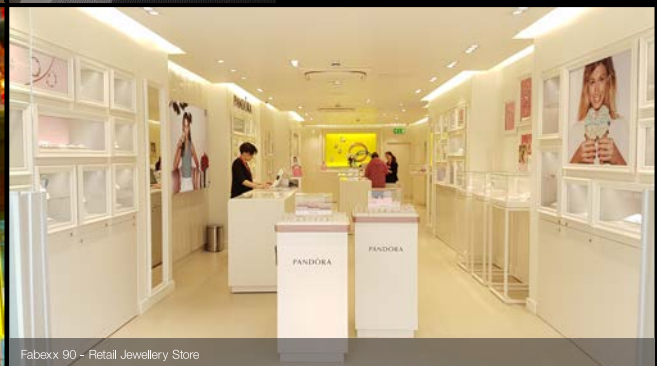
Fabexx 90 - Free-standing Exhibition Stand 4 x 2.4m high



Fabexx 90 - Suspended Window Display



Fabexx 90 - Magnetic Jewellery Display



Fabexx 90 - Retail Jewellery Store



Fabexx 180 - Retail Display Unit 6 x 2.4m high



Fabexx 90 - Retail Display Unit 1.4 x 2.2m high



Fabexx Y2 - Ceiling LED Light Unit 5 x 15m high



Fabexx 18 trimmed around door and corner



Fabexx 90 with Break Glass box

FABEXX®

Contact

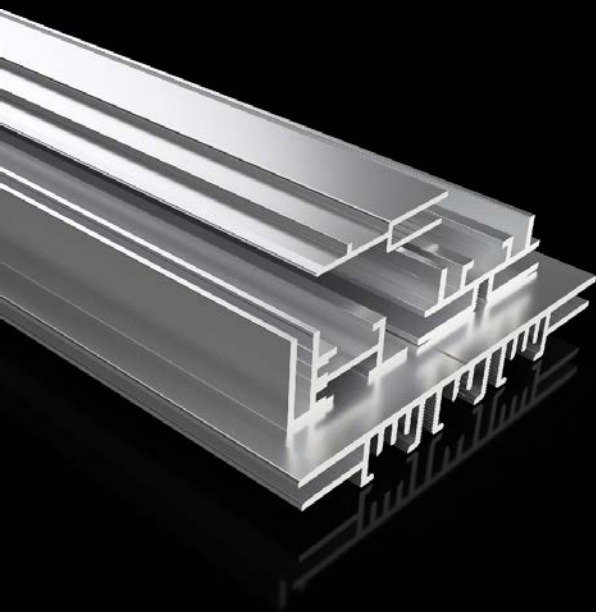


Visual Edge Limited
Business Park
Strathmourne Drive
Strabane
County Tyrone
Northern Ireland
BT82 9JY

T: +44 (0)28 7138 3904

E: sales@visedge.com

W: www.visedge.com



fabexx[®]